

W-02 / W-03 FIRE RATED WINDOWS

BAGGERØD

FIRE RATED WINDOWS FOR MARITIME ENVIRONMENTS

As a leading manufacturer of Fire Rated Windows, Baggerød windows provide the best protection against fire, water, heat and noise. Baggerød windows are available in fire class: A-0, A-60, H-60 and H-120*. The products comply with IMO, Solas and NORSOK requirements.

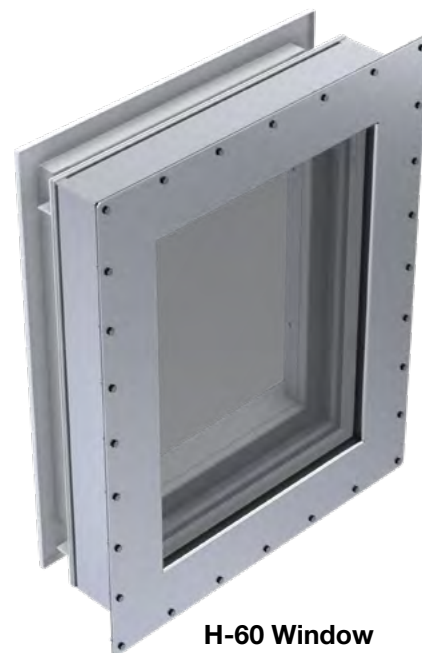
Office/factory address: Horten Industripark, Nedre vei 8, Building 30C, 3183 Horten, Norway
 Post address: Post address: Post box 155, NO-3192 - Horten, Norway
 Telephone: +47 33 03 56 80
 E-mail: sales@baggerod.no
 Website: www.baggerod.no
 Enterprise no: NO 983 493 653

Baggerød windows offer:

- High quality
- Solid construction
- High sound reduction
- Adaptable installation possibility
- Quick installation
- Sealed condensation free glass
- Replaceable glass from internal side
- Industry approved design
- Options for blinding against sun and reflections
- Delivery fully assembled or for assembly at site



A-60 Window
with internal frame.





H-60 Window
with internal frame.





| Description | W-02-C A-60 Window | W-02-H A-60 Window | W-03-C H-60 Window | H-120 Window |
|---------------------------|--|--|--|--|
| Fire Class | A-0 / A-60 | A-0 / A-60 | H-60 | H-120* *Supplied by IMS Technologies. |
| Max. glazing size: | 1200x1900 mm (WxH) | 2100x1800 mm (WxH) | 1360x1360 mm (WxH) | More information on request. |
| Fire Glass | Contraflam | Hero Fire | Contraflam Marine H120 | |
| Material | 4mm frame/5mm fixing frame/2mm internal frame. Mild steel or Stainless steel | 4mm frame/5mm fixing frame/2mm internal frame. Mild steel or Stainless steel | 4mm frame/4mm fixing frame/2mm internal frame. Mild steel or Stainless steel | |
| Fixing to bulkhead | Bolted or Welded | Bolted or Welded | Bolted or Welded | |
| Finish | Powder coated or Polyurethane Coating. | Powder coated or Polyurethane Coating. | Powder coated or Polyurethane Coating. | |
| Sound reduction | Rw 48 - 62 dB | Rw 48 - 62 dB | Rw 48 - 62 dB | |

CONFIGURATION OF WINDOWS

BASIC PARTS

| | | |
|---|--------------------------|--|
|  | 31007* | Installation kit for bolted windows. *Larger windows: custom kit |
|  | 18108 | Gasket |
|  | 18007 | Gasket |
|  | 20201(3mm) 20202(5mm) | Fiberfrax, isolation material |
|  | 20303 | Promatect H, isolation mat. |
|  | 10003331 | Dow corning 791 silicone weatherproofing sealant |
|  | 70008 (BL) | FireStop Sealant 3000 |

FIRE GLASS

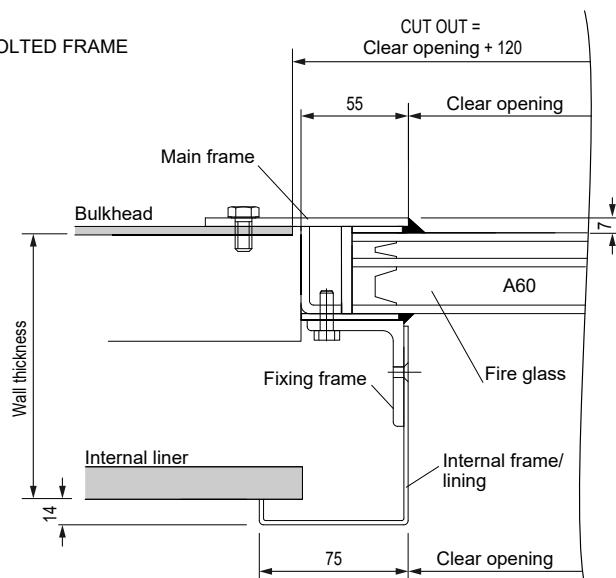
| | |
|---|--|
|  | HeroFire A-60 Glass unit Contraflam A-60 Glass unit |
|  | Contraflam H-120 (H-60) Glass unit |

OPTIONS

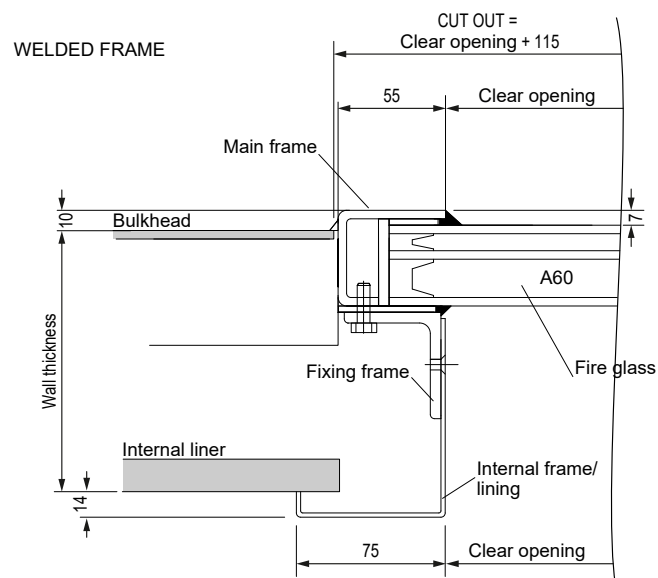
| | |
|--|---|
|  | Internal frame (lining) cassettes (integrated roller blind, option) |
|  | Internal frame (lining) cassettes with sound reduction glass (integrated roller blind, option). |
|  | Manual roller blind |
|  | Electric roller blinds |
|  | Sun-protection |
|  | Blackout |
|  | Venetian Blinds |
|  | Electric heating (only Contraflam glass) |
|  | ClearShield chemical glass protection treatment. |

Fire rated Windows TECHNICAL DETAILS

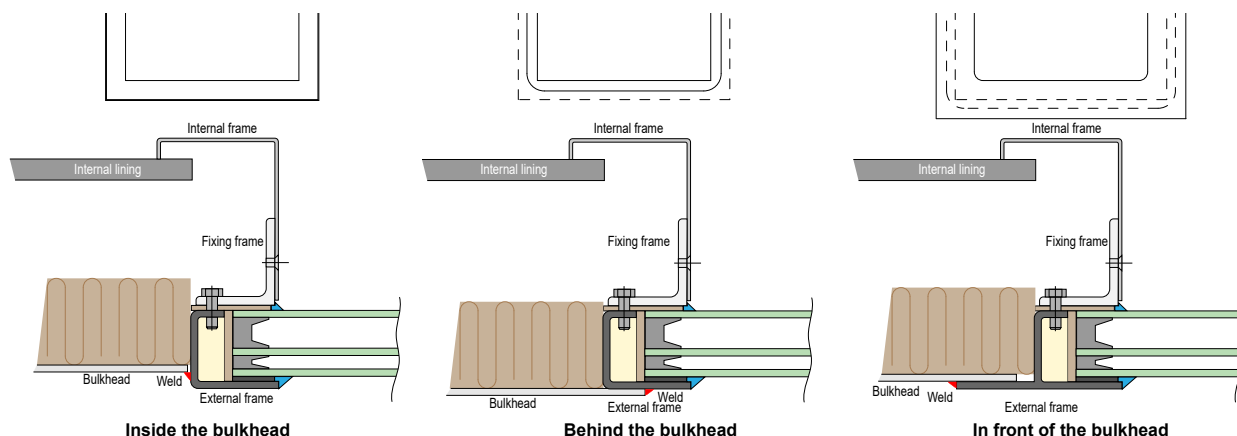
BOLTED FRAME



WELDED FRAME



Welded frame designs:



Inside the bulkhead

Behind the bulkhead

In front of the bulkhead