

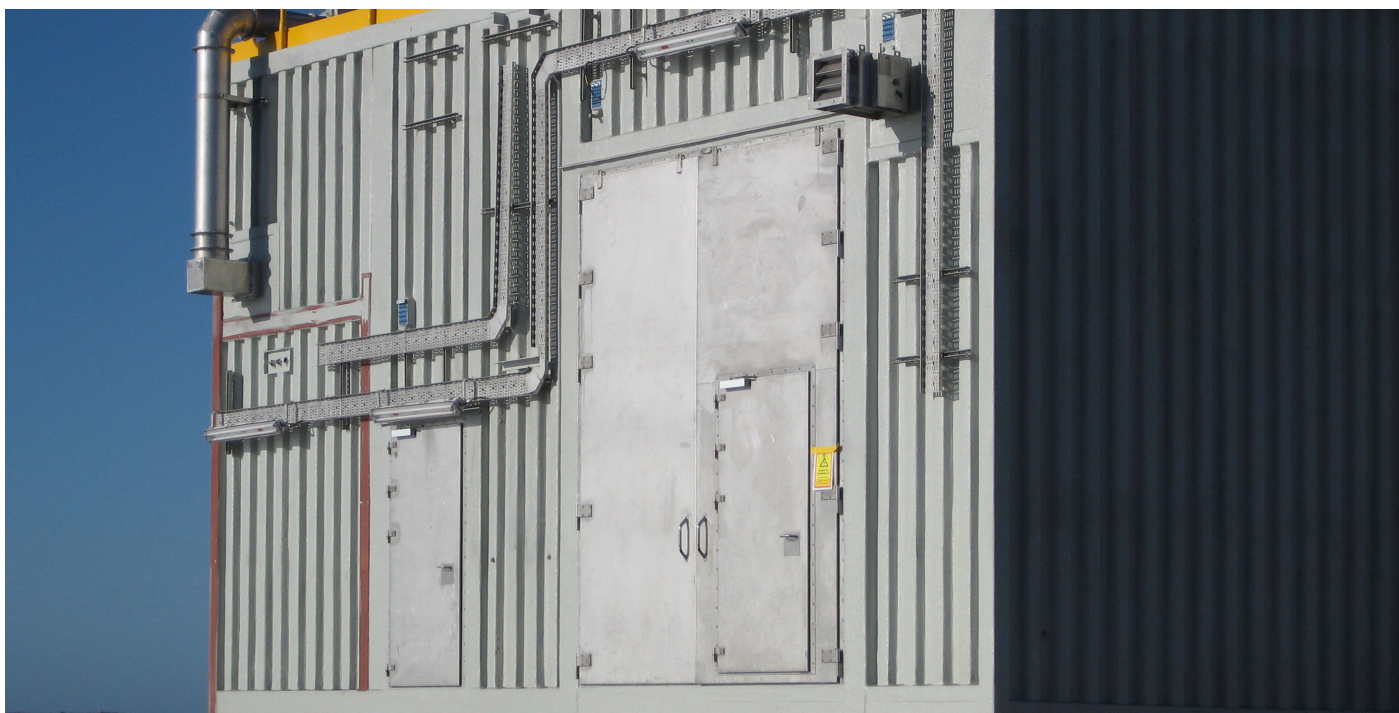


# Complete program of Marine Fire Doors and Windows

World leading manufacturer of certified fire rated doors and  
fire rated windows for:

**Offshore energy installations, ships and vessels**





## **MARITIME DOORS AND WINDOWS FOR ALL PURPOSES**

### **THE COMPLETE PROGRAM OF MARITIME FIRE RATED DOORS AND SAFETY WINDOWS**

Baggerød offer complete program of high quality fire doors and windows for offshore installations and ships worldwide. Typical and special designed.

Baggerød also supply electric drive system for sliding doors (Ex certified/non Ex).

A complete program of high-quality fire rated:

- Fire doors
- Windows
- Escape hatches

Our products are available in all fire classes for internal or external use.

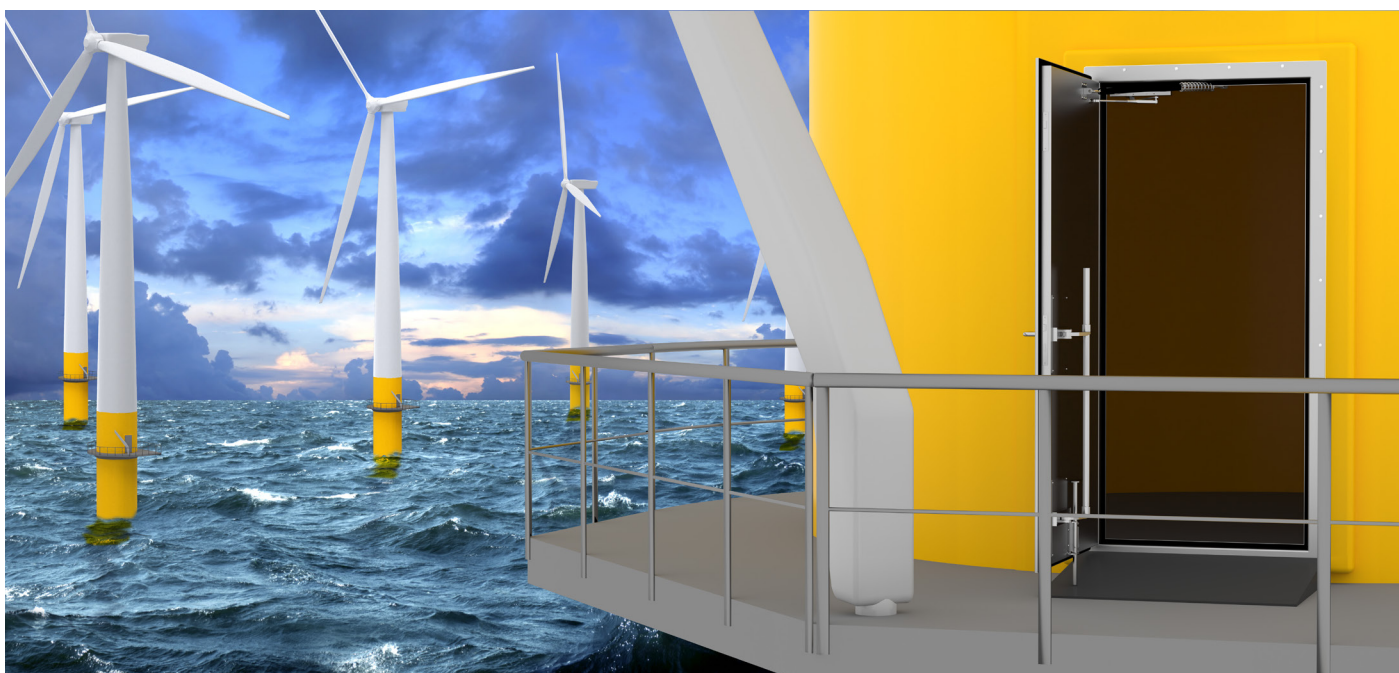
We are a highly flexible organization that is well-suited for both standard and specially-made productions.

Quality is key for our products that are built to last.

We have been manufacturing marine doors and windows since 1943 and have supplied offshore installations and ships worldwide.

We have production facilities in Norway and Lithuania.

**Our experienced sales team is available to help you find the right solutions and products for your project. [sales@baggerod.no](mailto:sales@baggerod.no)**



## TECHNICAL INFO:

Baggerød has long experience in marine fire-door production. Our door designs have been well-proven for many years.

### THIN STEEL PLATE CONSTRUCTION

Our doors are made of thin steel plates that are point welded together to avoid heat-deformation of the metal.

### DOOR CLOSER OR AUTOMATIC OPERATION

Manual operated doors are normally delivered with a door closer. Baggerød also delivers electric or pneumatic systems for automatic handling of the doors.

### SOUND REDUCTION

Baggerød have many doors that are tested for sound reduction (see product data-sheets for details). Sound reduction require gaskets all around the doors.

### GAS TIGHTNESS

Most of our fire-doors can be gas-tight when delivered with gaskets all around the door.

### WEATHER PROOFING

Our external fire-doors are designed to withstand normal marine weather (spray tight) conditions. External doors are delivered with gaskets, and a minimum threshold height. Baggerød HB-6000W is a weather-tight door.

### BLAST RESISTANCE

We have doors that are blast-resistant from the external side. We can also calculate and produce doors for specific blast ratings on a project basis.

### JETFIRE RESISTANCE

We have a H-120 door leaf with J-60 jetfire certification.



### SURFACE PROTECTION

Baggerød doors can supply door according to several surface protection procedures:

- Powder painted
- Wet painted
- Wet painted (NORSOK requirements)
- Acid washed stainless steel

Standard RAL colours.

### INDUSTRIAL FINISH

The doors have an "industrial" finish. Welding points may be slightly visible.

### BOLTED OR WELDED BULKHEAD FASTENING

Baggerød recommends bolted installations as they ensure flexibility during installation. Welded doors can be supplied.

## PRESERVATION, PACKING AND HANDLING

Baggerød standard preservation, packing and handling procedure ensures safe packing and handling for normal transportation and storage. If the goods need extra preservation, we recommend using a more extensive procedure on a project basis.

### MARKING OF PRODUCT

To comply with NORSOK C-002, edition 4, chapter 7.10 and 7.16 and DNV's requirements for marking of products, the door leaf is provided with a durable sticker/tag sign to fulfil these requirements. Metal tag plates can be supplied.

### TESTING

All equipment functions are tested during assembly of the doors. If you want a FAT test or other testing of the doors, that can be arranged on a project basis.

### PRODUCT DOCUMENTATION

For basic door deliveries, we supply a standard package of documents:

- Document list (SDL)
- Product data sheet
- GA Drawing (general)
- Electric wiring or pneumatic drawing (if applicable)
- Installation Maintenance and Operation manual (IOM)
- Certificates and Declaration of Compliance.

On a project basis we supply more complex documentation packages.

### QA

Baggerød AS are ISO9001: 2015 certified and all products are produced and tested according to our QA system and the certification and approvals.

### CERTIFICATION

Baggerød as have certified products according to IMO-SOLAS regulations and major classification societies such as: DNV, Lloyds Register of Shipping, Germanischer Lloyd's, Bureau Veritas, US Coast Guard, ABS, Russian Maritime Register of Shipping European Community has established an EU Directive on Marine Equipment that complies with and have issued a DNV MED certificate ("wheel" mark).

### LIFE-CYCLE SERVICES

Our life-cycle service department is an important part of our company. The life-cycle department can assist after the product has left the warehouse. For more information, see our LifeCycle services brochure or please contact the LiveCycle services department: [service@baggerod.no](mailto:service@baggerod.no)



# HINGED DOOR SERIES

EXTERNAL HINGED DOOR Series

## HEAVY DUTY

### H-CLASS

H-120H/H120HH/H120HH-T (H-120)



H-0H/H-0HH (H-0)



## HEAVY DUTY

### A-CLASS

HB-6000 / HB-6000W (A-60)



Weather-tight

HB-5000 / HB-5000DD / HB-5000DD-T (A-60)



INTERNAL/INTERIOR DOOR Series

## MEDIUM DUTY

### A-CLASS

HB-H / HB-HH, (A-60)



## LITE DUTY

HB-H (A-0/A-30)



### B-CLASS

G007/G007DD (B-15)



\*HB-H A-60 can be used externally as container door or as a door that is not exposed to harsh weather or sea.

# SLIDING DOOR SERIES

EXTERNAL SLIDING DOOR Series

## HEAVY DUTY

### H-CLASS

H-120S (H-120)



### A-CLASS

HB-S/ HB-SD 104 (A-60)



## MEDIUM DUTY

### A-CLASS

HB-S76 (A-60)



LARGE WINDOW IS NON-RATED

INTERNAL/INTERIOR DOOR Series

## MEDIUM DUTY

### A-CLASS

HB-S76 (A-60)



## LITE DUTY

### B-CLASS

HB-S-B-30 (B-15)



# ESCAPE HATCHES

## A-CLASS

HB-5000-EH / HB-5000-GEH / HB-5000-GEH-GRID (A-60)



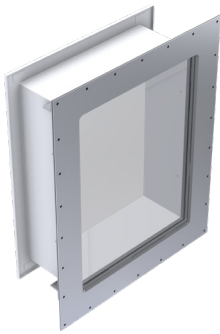
HB-H-EH (A-60)



# WINDOWS

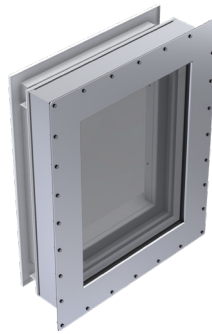
## A-CLASS

WINDOW A-60

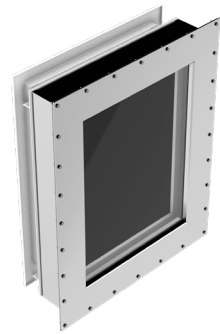


## H-CLASS

WINDOW H-60



WINDOW H-120 (IMS)



The picture is different from the original product.



# DRIVE SYSTEMS & ACCESSORIES

INTERNAL AND EXTERNAL

A-CLASS

**ELECTRIC**

**HBI100EL**



FOR SLIDING DOOR

**HBI200EEx**

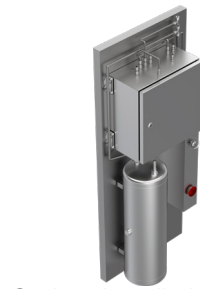


FOR SLIDING DOOR (Ex)

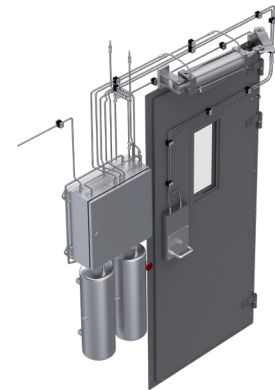
**PNEUMATIC**



FOR SLIDING DOOR



Option: Installation plate



FOR HINGED DOORS

INTERNAL

NON RATED

**ES PROLINE**



FOR SLIDING DOOR

**ED250**



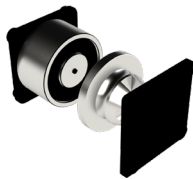
FOR HINGED DOOR

**ED100**



## ELECTRIC OPTIONS AND ACCESSORIES

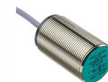
**HOLD OPEN DEVICES**



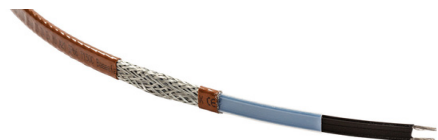
**ACCESS DEVICES**



**SIGNAL AND SURVEILLANCE**



**ANTI FREEZE EQUIPMENT**



# BAGGERØD

Office/factory address: Horten Industripark, Nedre vei 8, Building 30C, 3183 Horten, Norway  
Post address: Post address: Post box 155, NO-3192 - Horten, Norway  
Telephone: +47 33 03 56 80  
E-mail: sales@baggerod.no  
Website: www.baggerod.no  
Enterprise no: NO 983 493 653

## REFERENCES

Baggerøds Main business areas are:  
**Offshore, Offshore-wind farm, Commercial vessels and Cruise vessels.**  
Here is a small part of our reference-list:

EQUINOR - GINA KROG LQ / IVAR AASEN LQ



EQUINOR - JOHAN SVERDRUP



EQUINOR - JOHAN CASTBERG



HURTIGRUTEN



EQUINOR - OFFSHORE WIND ENERGY



BLADT / ØRSTED - HORNSEA II

