

# ELECTRIC OPTIONS AND ACCESSORIES

## HOLD OPEN DEVICES

To control doors that need stay open a magnetic holder can be installed. We have types for all door types. Ex approved and non Ex. We also supply non electric solutions for lighter doors. More options available on request.



- 10004983 **Electro-magnetic door holder (Hold open) (Approval to EN1155)**  
For internal use. IP40 (Holding force: 100kg/960N, 24Vdc)
- 10004925 **Electro-magnetic door holder Ex Class: II2G EEx m II T6 I.**  
IP65 Force: 650N /100kg.
- 40311 **Holding Magnet, Elomek 650 N GPT-24VDC**
- 40313 **Holder/armature for 40311**  
Elomek AG with adjustable socket Ø54

## ANTI FREEZE PROTECTION

With a heating cable installed in the door, heating may keep the door running smoothly even at very low temperature. Other systems available on request.



- 59200 Heating cable kit (Incl. thermostat) QTVR self-regulating trace heating cables are suitable for freeze protection of doors etc. with high heat loss, and for process temperature maintenance applications without steam-cleaning requirements, up to 225 °F/110 °C. The fluoropolymer outer jacket (-CT) provides high chemical resistance against aggressive organics and corrosives.

## ELECTRONIC ACCESS SYSTEM

Special access control systems can be arranged on a project basis.



- Project **Card reader.**
- Project **Dorma coed/card reader**
- Project **Dorma Touch-free switch**
- Project **Securex-Lock**

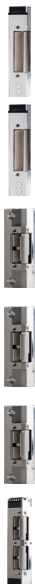
## AUTOMATIC LOCKING - ELECTRIC STRIKER PLATES

Electric strikes are used to open automated doors automatically. Bolt contact must be used if the lock case have a dead bolt for key locking.

### HPR® (HIGH PRELOAD RELEASE)

It's a patented technology developed by STEP Locks for electric strikes (also called electric door strikes or electric latch releases). HPR® allows the electric strike to release the latch even when there is pressure on the door.

For example, from tight weather seals, misaligned doors, or automatic door closers.



- 10005078 **Electric strike STEP 30 Preload with HPR function. Adjustable function 24 V DC including bolt contact. 250 kg preload pressure. ST305HPR**
- 10008436 **Electric strike STEP 30 Preload. Adjustable function 12 V DC including bolt contact. 40 kg preload pressure. ST305-12**  
*STEP are developing a HPR version of ST305-12. BAG art. no. 10011178*
- 10000257 **Electric strike STEP 90 Preload, HPR®. Adjustable function 24 V DC. 250 kg preload pressure. ST95**
- 10000749 **Electric strike STEP 90 Preload, HPR®. Adjustable function 24 V DC, including bolt contact. 250 kg preload pressure. ST905**
- 10003421 **Electric strike STEP 90 Preload, HPR®. Fail safe function 24 V DC, including bolt contact. 250 kg preload pressure. ST901**
- 10000139 **Electric Double strike STEP 92 Preload HPR®. Adjustable function 24 V DC, including bolt contact. 250 kg preload pressure. ST925**



1000750 **Electric strike STEP 98 Preload. Adjustable function 24 V DC. 40 kg preload pressure. ST985**



10007439 **Electric strike STEP 98 Preload. Adjustable function 24 V CD, including bolt contact. 40 kg preload pressure. ST9805**



10004128 **STEP dead bolt indication/bolt contact, micro switch, ST4880**



10000140 **Face plate for STEP 92 Preload, ST9518H**



10000617 **Face plate for ST9015 Safety strike plate/cover box, STEP 40, 90, 48, 98 Preload. ST4003-21**



10002893 **Face plate for ST9015 Safety strike plate/cover box, STEP 40, 90, 48, 98 Preload. ST4002-10**



10006556 **Face plate for Electric strike STEP 30 Preload. ST3545**



10005604 **Lead cover, frame transfer for a cable. ST1283**



10010231 **Halogen free Connection cable ST5573720 for STEP Electric strike.**  
The cable is 7 m long and has 5 conductors. for Electric strike STEP 30, 40, 90, 48, 98 Preload. ST4016



10011312 **Connection cable for Electric strike STEP 30, 40, 90, 48, 98 Preload.**  
The cable is 7 m long and has 5 conductors. **ST4016H**

## ELECTRIC LOCK CASE



10011987 **STEP 130 Solenoid handle lock complete set. Including ST130, STEP lead cover ST1283**  
Tested on door HB-H A-60



10011971 **Frame for cable lead movement**  
Replaces the frame in art. 10005604

## SIGNAL AND SURVEILLANCE

### LIMIT SWITCH



40445 **Limit switch (Atex certified) 7G, ATEX/IECEX,**  
Hermetically Sealed. (Including cable)



40446 **Limit switch (Atex certified) 73, ATEX/IECEX,**  
Hermetically Sealed. (Including cable)



40337 **Topworx Target Magnet for limit switch, AMP3**

Magnetic contact



40331 **Magnetic contact**

### MICROSWITCHES



10009196 **MICRO SWITCH GLE Series Global Limit Switches, Side Rotary With Roller -**  
Adjustable, 2NC 2NO DPDT Snap Action, 20 mm, GLEEC24A2A



10004429 **Limit Switch OsiSense XCKN2145P20**

## SIGNAL AND SURVEILLANCE

### INDUCTIVE SENSOR M12



10006708

**Inductive sensor, NJ4-12GK-SN, Pepperl+Fuchs**

4 mm non-flush, Usable up to SIL 3 acc. to IEC 61508, Degree of protection IP68, ATEX-/IECEX-approvals for zone 0/1/20/21 (Ex i), ATEX-/IECEX-approvals for zone 2/22 (Ex ec/tc)". M12 x 1

### INDUCTIVE SENSOR M18



10004245

**Inductive sensor, NCB8-18GM40-N0, Pepperl+Fuchs**

8 mm flush, Usable up to SIL 2 acc. to IEC 61508, NAMUR output, Stainless steel housing, Polarity reversal protected. M18x1



2000072

**Inductive sensor, NCB8-18GM40-N0-5M, Pepperl+Fuchs**

8 mm flush, NAMUR output, Stainless steel housing, Polarity reversal protected, 5 meter connection cable. M18x1



10009322

**Inductive sensor, NCB8-18GM40-N0-10M, Pepperl+Fuchs**

8 mm flush, NAMUR output, Stainless steel housing, Polarity reversal protected, 10 meter connection cable. M18x1



10005543

**Inductive sensor, NRB8-18GH40-E2, Pepperl+Fuchs**

Reduction factor = 1, Magnetic field resistant, Stainless steel housing, Front face FDA conform. M18x1



10009393

**Inductive sensor, NRB8-18GH40-E2-V1, Pepperl+Fuchs**

Reduction factor = 1, Magnetic field resistant, Stainless steel housing, Front face FDA conform. M18x1



10009394

**Door sensor cable - V1-GV4A-5M-PVC**

Degree of protection IP68 / IP69, Screw connection stainless steel, Specific design protects against loosening and inaccurate installation.



10007939

**Inductive sensor, NBB5-18GM-40-Z0, Pepperl+Fuchs**

5 mm flush, 2-wire DC. M18x1



10011903

**Inductive sensor, NJ8-18GK-N (2m cable), Pepperl+Fuchs**

8 mm non-flush, Usable up to SIL 2 acc. to IEC 61508, NAMUR output". M18 x 1



10012068

**Inductive sensor, NJ8-18GK-N-10M (10m cable), Pepperl+Fuchs**

8 mm non-flush, Usable up to SIL 2 acc. to IEC 61508, NAMUR output, 10 m connection cable". M18 x 1



2000073

**Proximity Switch | Explosion Proof / Flameproof**

INMETRO Ex d/db/tb IIC / IIIC T6 SPCO/SPDT. Euroswitch. M18x1

### INDUCTIVE SENSOR M30



10000564

**Inductive sensor, NBB15-30GM50-US, Pepperl+Fuchs**

Basic series, 15 mm flush, 2-wire AC/DC. M30x1.5



48028

**Inductive sensor, NBB-15-30GM50-E2-3G-3D, Pepperl+Fuchs**

Increased operating distance, 15 mm flush, ATEX-/IECEX-approvals for zone 2/22 (Ex ec/tc). M30x1.5



10009795

**Inductive sensor, NBB10-30GK60-AR-3M, Pepperl+Fuchs**

Relay output, Sensing range 10 mm, SPDT output, Switch load currents to 6 Amps". M30x1.5



10010461

**Inductive sensor, NJ4-30GM-N-200-10M, Pepperl+Fuchs**

Temperature range 0 ... 200 °C (0 ... 392 °F), NAMUR output". M30 x 1.5



48029

**Inductive sensor, NCN15-30GM40-Z0-V1, Pepperl+Fuchs**

15 mm non-flush, Extended temperature range, 2-wire DC. M30x1.5



## BRACKETS FOR SENSORS



2000483 Panic-bar sensor assembly kit, Ø30



10008102 Sensor bracket for door frame, Sensor hole ø14mm



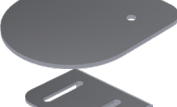
10005530 Sensor bracket for door frame, Sensor hole ø20mm



42220 Sensor bracket for door frame, Sensor hole ø33mm



10005544 Sensor trigger plate assembly (10005545, 10005546, screws)



10005546 Sensor trigger plate



10005545 Bracket for sensor trigger plate



2000407 Extra long "adjustable" sensor trigger plate

## MORE BRACKETS:



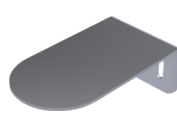
10006709 ø14



2000321 ø20



2000406 ø20



42221



42602 ø18



10004701 ø33

## EL STRIKE SOLUTION FOR HB-5000DD EL DOORS

Preliminary



Electric strike (ST305) plate assembly for HB-5000 double door (in passive door leaf).  
Tube (AISI316) inside the door leaf: Art. no 15000.  
Space slot in the door frame are project specific.



10005078 **Electric strike STEP 30 Preload. Adjustable function 24 V DC including bolt contact. ST305**



10005604 **Lead cover, frame transfer for a cable. ST1283**



PD0346 Faceplate assembly (Development)

