

HB-S76

A-60 CERTIFIED FIRE-PROOF MEDIUM DUTY SLIDING DOOR

THE MULTIPURPOSE SLIDING DOOR

HB-S76 is lighter A-60 door. This makes it a good choice for large doors. HB-S76 can be delivered manual, electric and pneumatic. With Baggerød HBI-100 electric system this is one of the most flexible and durable automated doors in the market. Standard the electric system is pre-installed on the door frame. A time and cost effective solution. HB-S76 for Internal use can be delivered ready for integration with the interior (“above ceiling”) or with side and top covers.

SPECIAL PRODUCT CUSTOMIZATION

Baggerød can on a project basis make customization to the door according to your needs and demands.

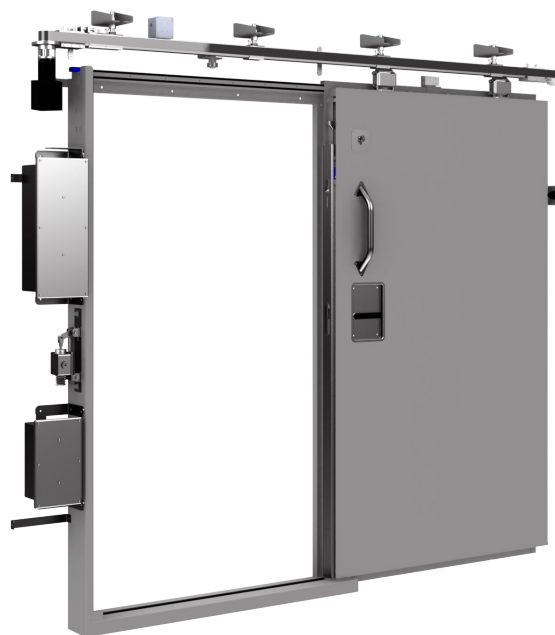
OPTIONS

- Vision panel 200x500mm. Large vision panel (Non rated.)
- Electric door operation*
 - Sea-mode/Car-deck functionality
 - Alarm
 - Key switch
 - Electronic locking
 - Limit switch for surveillance
- Pneumatic door operation*
- Recessed handles
- Extra locking features
- Hold open features
- Door stoppers
- Heat or earth cable
- EMC protection
- Electronic access control

* For more information regarding operation system options, see data sheets for operation systems.



Large vision panel, Non-rated



HB-S76 Electric, without side and top cover.



0575

Description	HB-S76	HB-S76 EL (electric)	HB-S76 PN (pneumatic)
Fire Class	A-60	A-60	A-60
Operation	Manual operation	Electric operation	Pneumatic operation
Door leaf	2 mm painted mild Steel or Stainless Steel surface	2 mm painted mild Steel or Stainless Steel surface	2 mm painted mild Steel or Stainless Steel surface
Frame	3 mm painted mild steel or Stainless Steel	3 mm painted mild steel or Stainless Steel	3 mm painted mild steel or Stainless Steel
Thickness of door leaf	76 mm	76 mm	76 mm
Max size (Clear opening W x H)	2420 x 2580mm	2420 x 2580mm	2420 x 2580mm
Sound reduction	Rw ≈ 43db (with gaskets)	Rw ≈ 43db (with gaskets)	Rw ≈ 43db (with gaskets)
Air and gas tight	≈ 0,1 m3/hm2 at 50 PA (with gaskets)	≈ 0,1 m3/hm2 at 50 PA (with gaskets)	≈ 0,1 m3/hm2 at 50 PA (with gaskets)
Application	Internal/External	Internal/External	Internal/External

CONFIGURATION OF HB-S 76 SLIDING DOORS

BASIC DOOR PARTS

	31003	Assembly Kit HB-S
	18014	Gasket Material: Silicone
	18003	Frame gasket Material: Silicone
Suspension parts		
	15303	Rail AISI304
	15302	Rail Carbon steel
	40626	Rail end-stop Material: AISI304
	40526	Rail clamp AISI316L
	40525	Rail clamp Carbon steel
	10002889	Trolley/Rollers
	10005105	Material: AISI316L
	10005104	
	10002792	Trolley/Rollers for electric doors
	10005079	Material: AISI316L
	10005104	
	10002977	Trolley/Rollers low for electric doors (belt fix.)
	10005079	Material: AISI316L
	10005084	
	10002793	Trolley/Rollers low for electric doors
	10005105	Material: AISI316L
	10005084	


Door handles

	10002421RH 10002420LH	Recessed door handle with blind escutcheon. AISI316L For el. doors.
	40208- 40117- 40118	Recessed door handle with blind escutcheon. Material: AISI316L
	40126	Door handle with blind escutcheon. 9mm Material: AISI316L



DOOR LEAF GUIDING/STEERING PARTS

	59622 10006378 30900 40538 40622	Guide wheel with bracket (Top) Material: AISI316L Wheel: art. 40538
	59667	Guide wheel with bracket, low (Bottom) Material: AISI316L Wheel: art. 40539
	10003883	Guide wheel with bracket, slim (Bottom) Material: AISI316L Wheel: art. 40539
	59621	Guide wheel with bracket, high (Bottom) Material: AISI316L Wheel: art. 40539
	10006223 RH 10006224 LH	Guide wheel with bracket, (Bottom) Material: AISI316L Wheel: art. 40539
	40619	Wedge (lower) Material: POM 35x60x18x20mm
	40620	Wedge (upper) Material: POM 35X60X20mm
	10008357	Wedge (lower) Material: POM 35x60x13mm

LOCK CASE

	10000633/ 10000634	Lock case (Latching) including eye bracket. Material: AISI316L (old part no. 40028)
--	-----------------------	---

PULL handles

	40141	Recessed pull handle Material: AISI316L
	40206-1	Pull handle Material: AISI316L

CONFIGURATION OF HB-S 76 SLIDING DOORS

OPERATION PARTS (MECHANICAL)



Safety strip
Material: SS
For pneumatic doors

Assembly Counterweight system
for manual doors

Brake Cylinder
Material: AISI303/304
For manual doors

For parts for pneumatic or electric system, please see separate data sheets or system drawings.

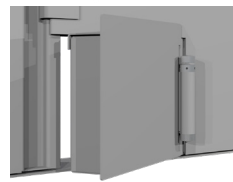
OPTIONS AND ACCESSORIES



Vision panel (Option)
Pilkington Pyrostop® Type 60-201
For external application (meets 60 minutes insulation and integrity)
Multilaminated fire resistant glass of Pilkington Optiwhite™ with intumescent layers and safety interlayer



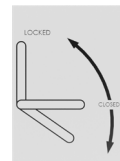
“FERRY” Vision panel
Max size: 800w x 1600h mm
(Option: NON RATED)
Pilkington Pyrostop® Type 60-201
For external application (meets 60 minutes insulation and integrity)
Multilaminated fire resistant glass of Pilkington Optiwhite™ with intumescent layers and safety interlayer



Assembly Hose port for HB-S76



59657 Door stopper
Material: AISI316L
On wall or floor



40416 / 40417 Open/Closed sign for door handle

ADVANCED DESIGNS

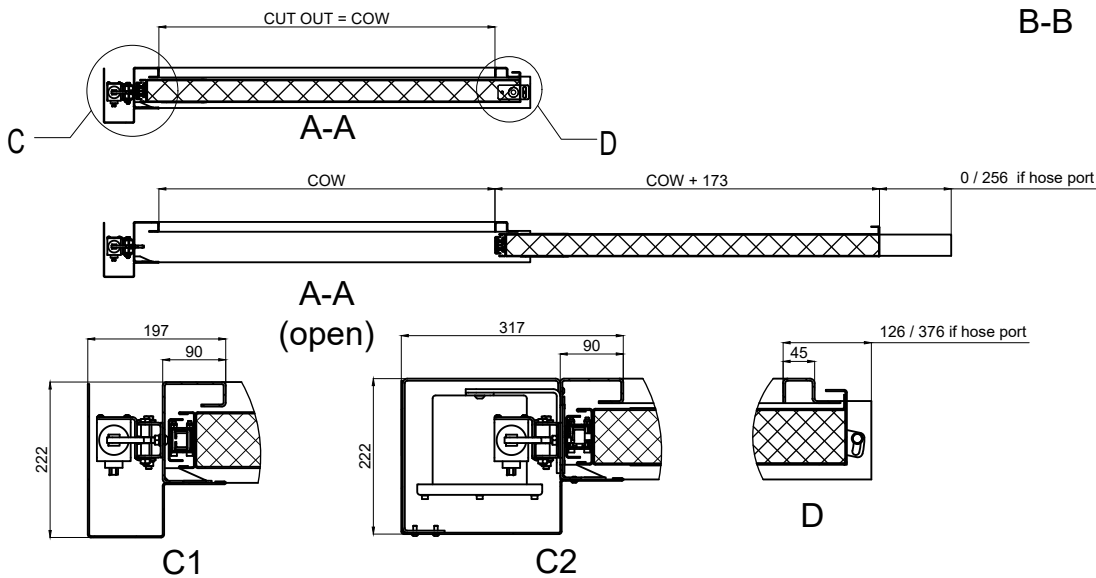
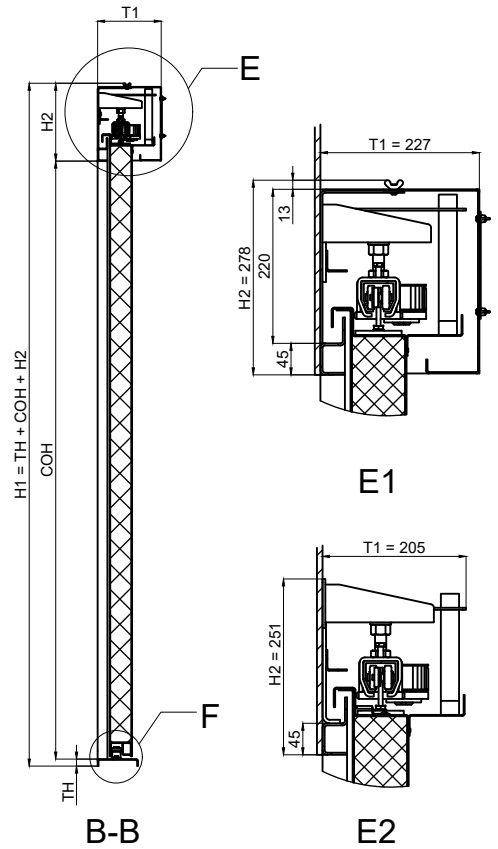
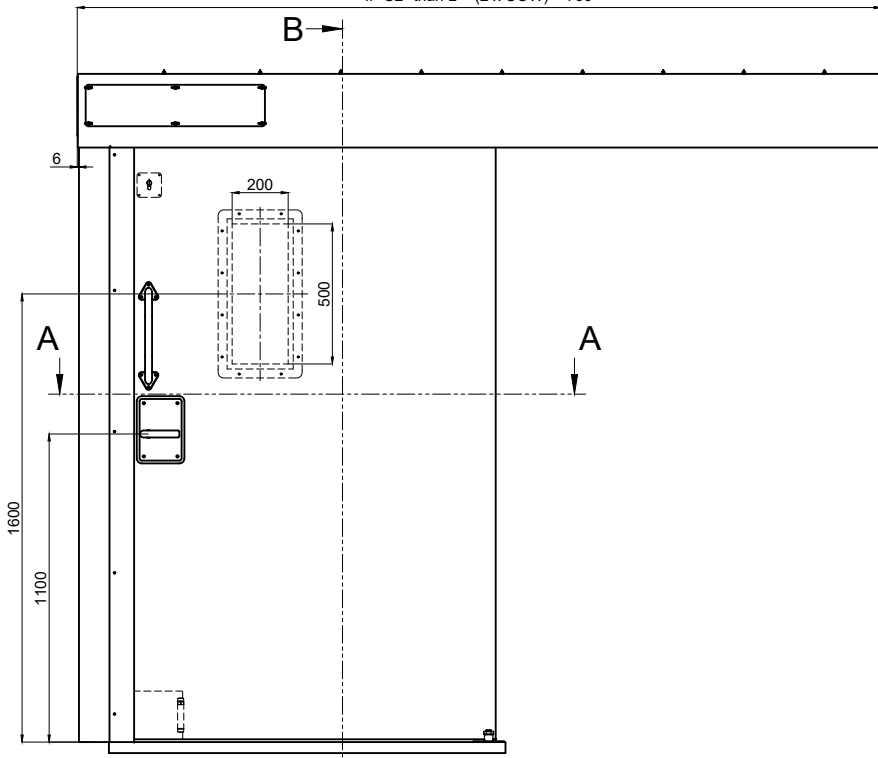
More advanced designs, and new configuration options may need calculations, design changes, extra logistics, tests and approvals.

- Larger vision panels (not within fire class)
- Manual door with “sloping” track/rail.
- Special threshold/sill designs
- Special frame and threshold designs
- Vulcanized gaskets and other gasket solutions
- Extra-large sizes
- “Door in door” solutions
- Supply of unfamiliar articles.
- Extra door reinforcements
- Changes in steel thickness
- Special surface treatments
- Other design changes

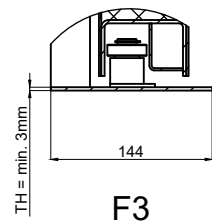
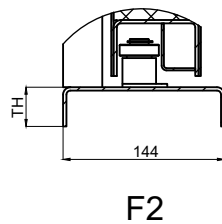
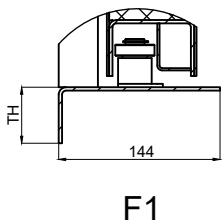
BAGGERØD AS

Office/factory address:	Horten Industripark, Nedre vei 8, Building 30C, 3183 Horten, Norway
Post address:	Post address: Post box 155, NO-3192 - Horten, Norway
Telephone:	+47 33 03 56 80
E-mail:	sales@baggerod.no
Website:	www.baggerod.no
Enterprise no:	NO 983 493 653

If "C1" than L = (2 x COW) + 600
 If "C2" than L = (2 x COW) + 700

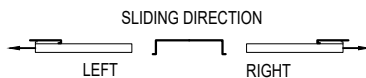


F: Threshold Type



Notes:

1. Example shows a right sliding door.
2. C1 shows narrow version of the front cover.
3. C2 shows the door with junction box and battery box hidden behind the front cover.
4. E1 shows the door with weather cover and suspension plate.
5. E2 shows the door without weather cover and with loose brackets.
6. Vision panel as an option.
7. Hose port as an option.

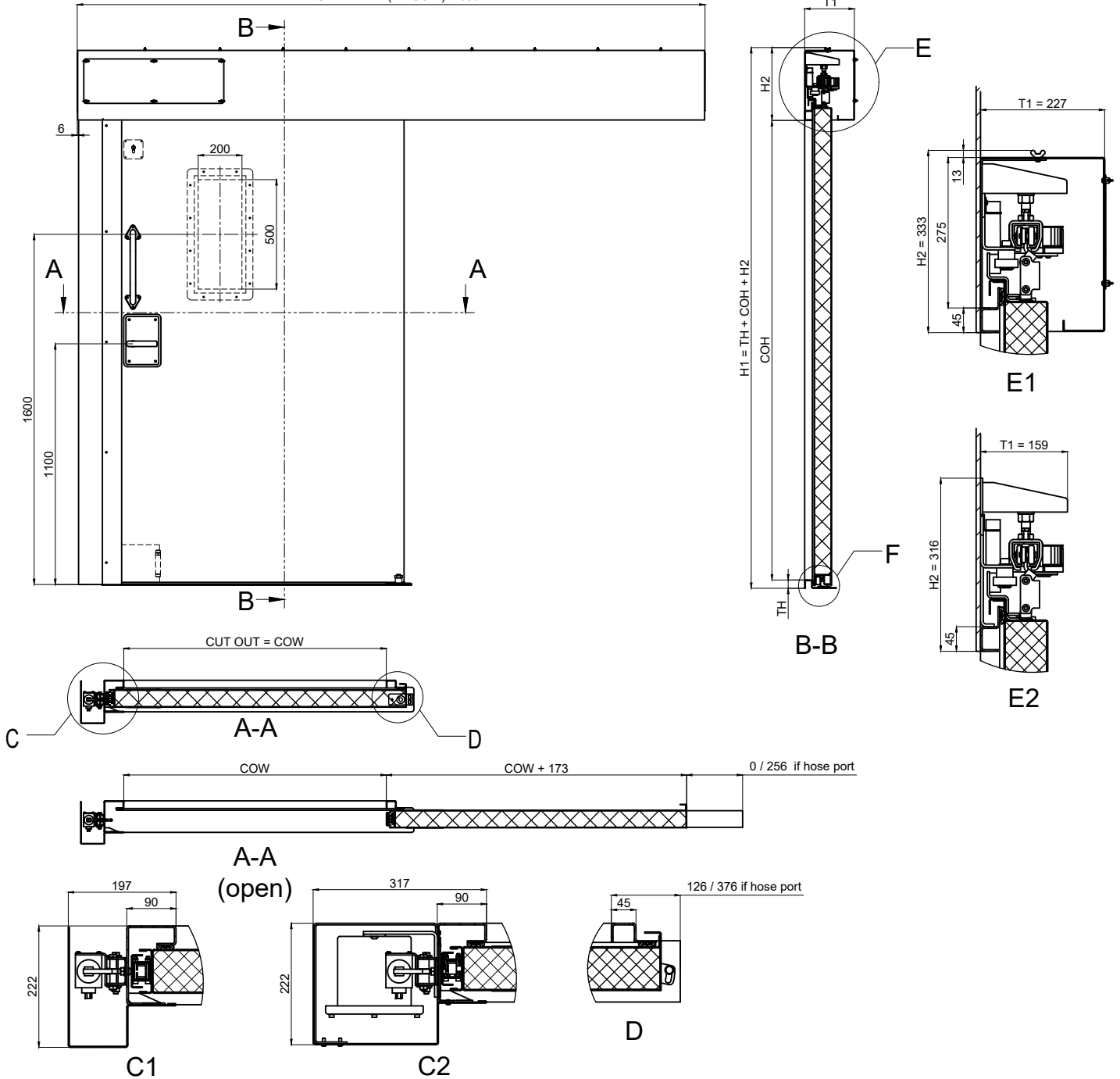


Drawing title:
 ENGINEERING TO ORDER
 HB-S76 (A-60) SINGLE SLIDING DOOR WITHOUT GASKET
 ELECTRIC OPERATED
 TYPICAL GENERAL ARRANGEMENT DRAWING

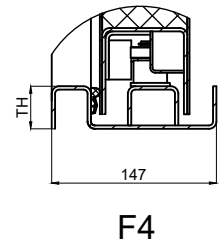
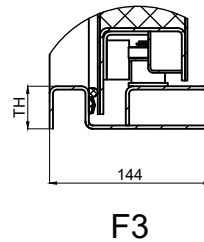
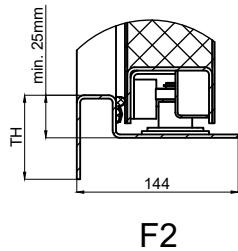
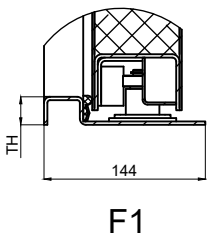


Date: 01.09.2021	Drawn by: MTU	Approved:
Format: A4	Sheet: 1 of 1	Projection:
Fire certificate: MED274917CS-002		Rev.: 01
Drawing no.: S-08		

If "C1" than L = (2 x COW) + 500
 If "C2" than L = (2 x COW) + 600

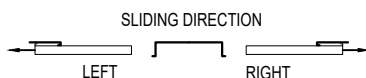


F: Threshold Type



Notes:

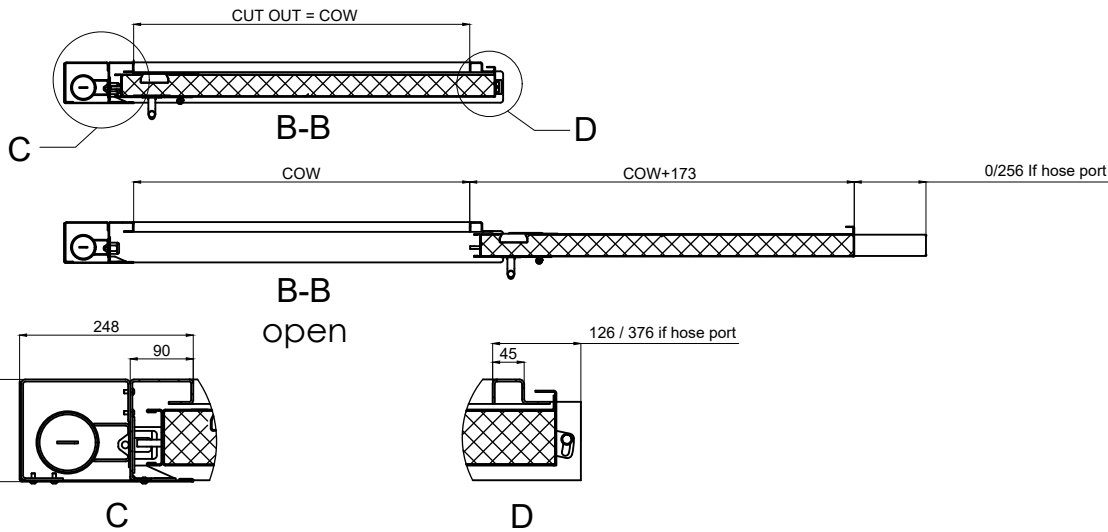
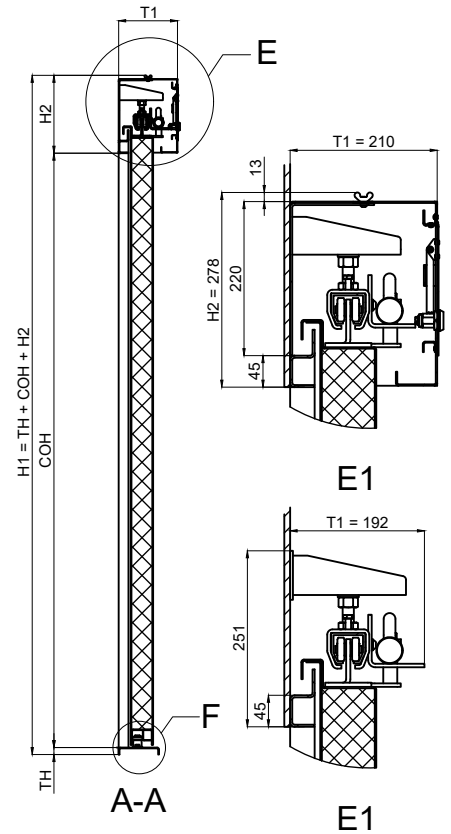
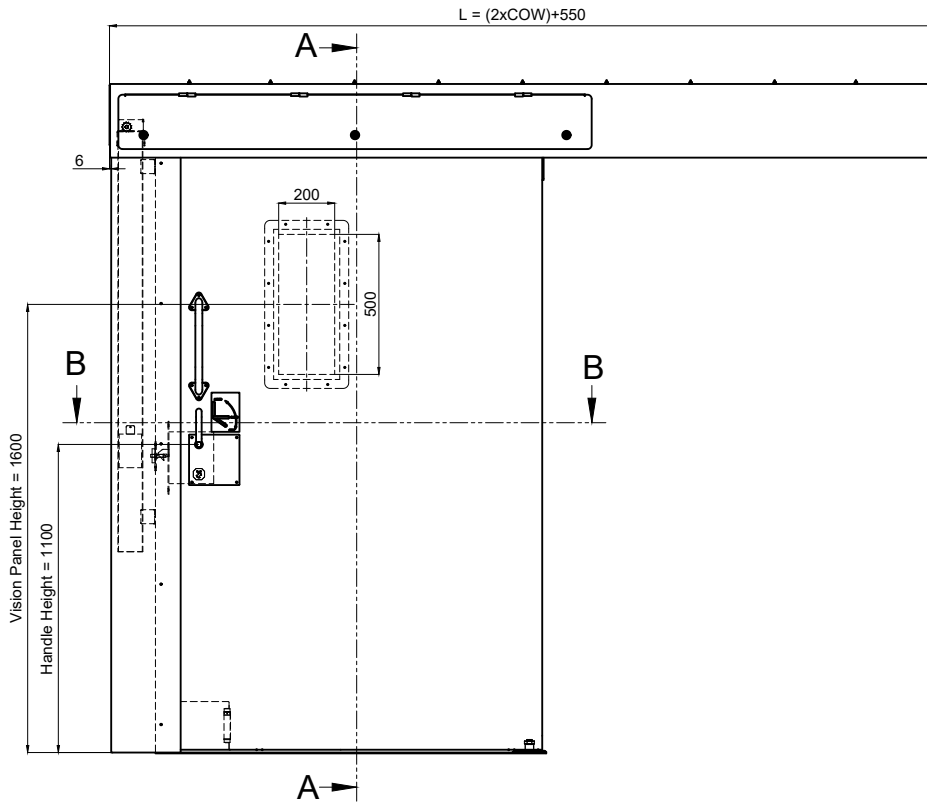
1. Example shows a right sliding door.
2. C1 shows narrow version of the front cover.
3. C2 shows the door with junction box and battery box hidden behind the front cover.
4. E1 shows the door with weather cover and suspension plate.
5. E2 shows the door without weather cover and with loose brackets.
6. Vision panel as an option.
7. Hose port as an option.



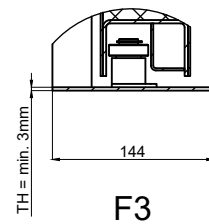
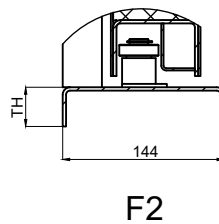
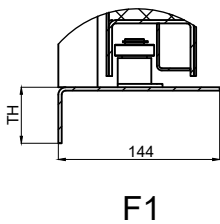
Drawing title:
 ENGINEERING TO ORDER
 HB-S76 (A-60) SINGLE SLIDING DOOR WITH GASKET
 ELECTRIC OPERATED
 TYPICAL GENERAL ARRANGEMENT DRAWING



Date: 01.09.2021	Drawn by: MTU	Approved:
Format: A4	Sheet: 1 of 1	Projection:
Fire certificate: MED274917CS-002		Rev.: 02
Drawing no.: S-08		



F: Threshold Type



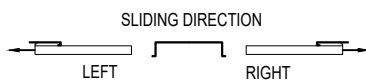
Notes:

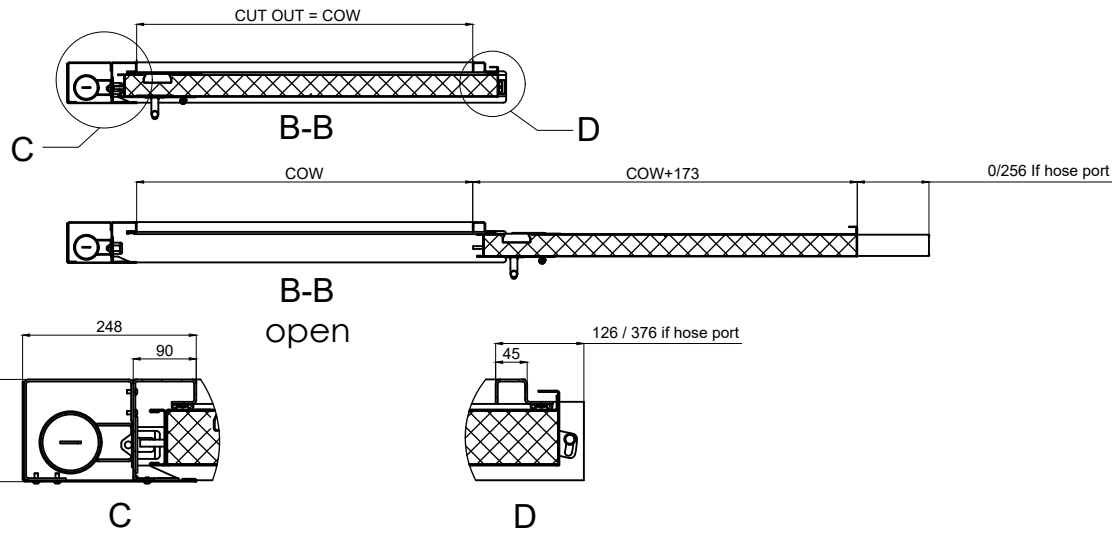
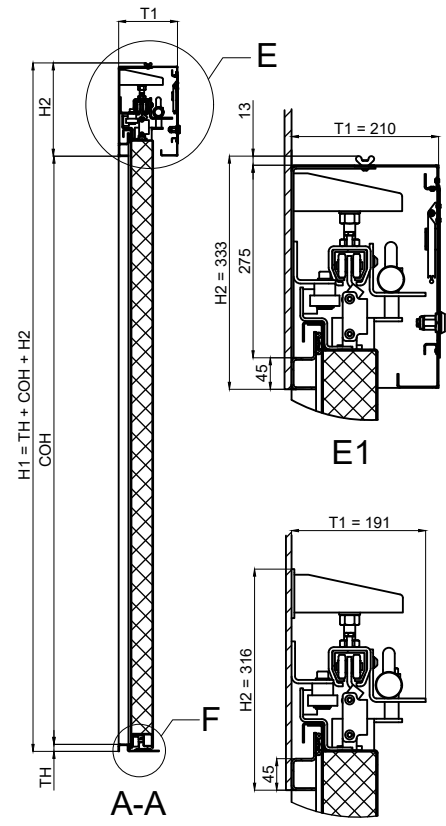
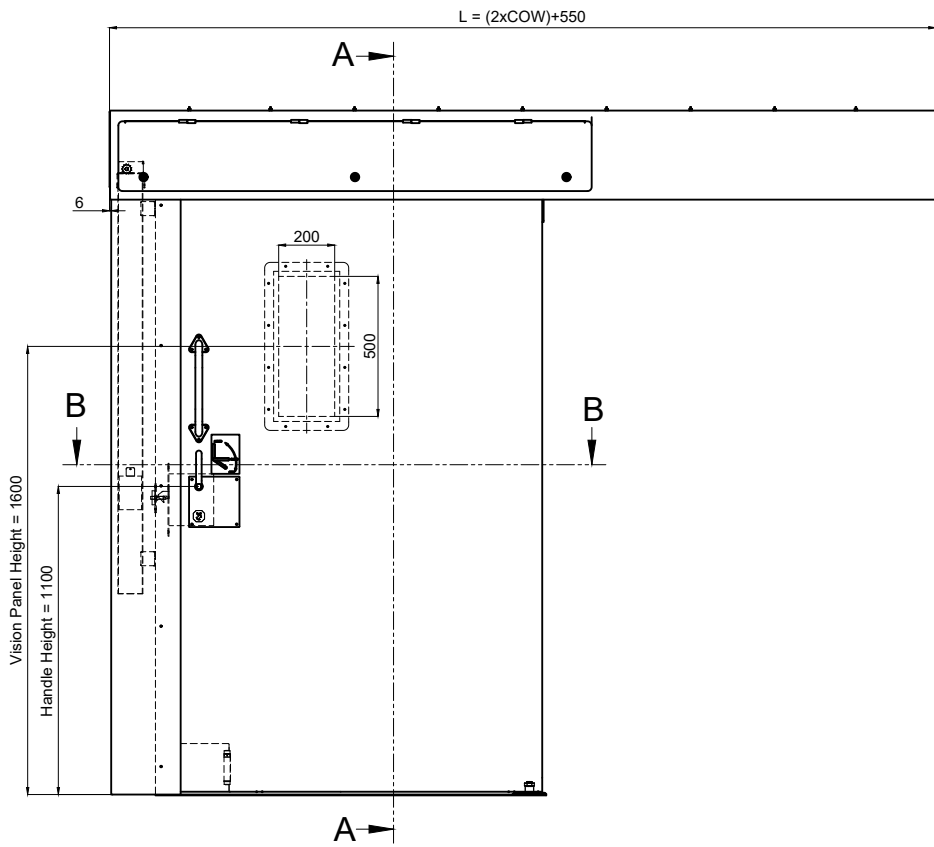
1. Example shows a right sliding door.
4. E1 shows the door with weather cover and suspension plate.
5. E2 shows the door without weather cover and with loose brackets.
6. Vision panel as an option.
7. Hose port as an option.
8. Breaking cylinder stroke: COW + 100

Drawing title:
ENGINEERING TO ORDER
HB-S76 (A-60) SINGLE SLIDING DOOR WITHOUT GASKET
MANUAL OPERATED
TYPICAL GENERAL ARRANGEMENT DRAWING

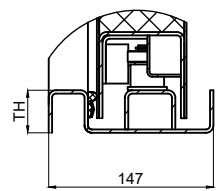
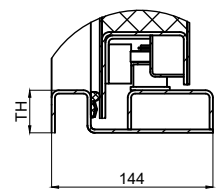
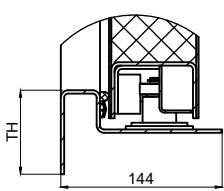
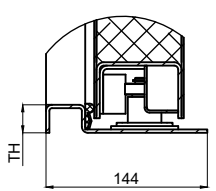
Date: 01.09.2021	Drawn by: MTU	Approved:
Format: A4	Sheet: 1 of 1	Projection:

Fire certificate: MED274917CS-002	Rev.: 01
Drawing no.: S-08	

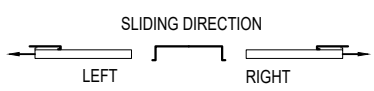




F: Threshold Type



- Notes:
1. Example shows a right sliding door.
 4. E1 shows the door with weather cover and suspension plate.
 5. E2 shows the door without weather cover and with loose brackets.
 6. Vision panel as an option.
 7. Hose port as an option.
 8. Breaking cylinder stroke: COW + 100



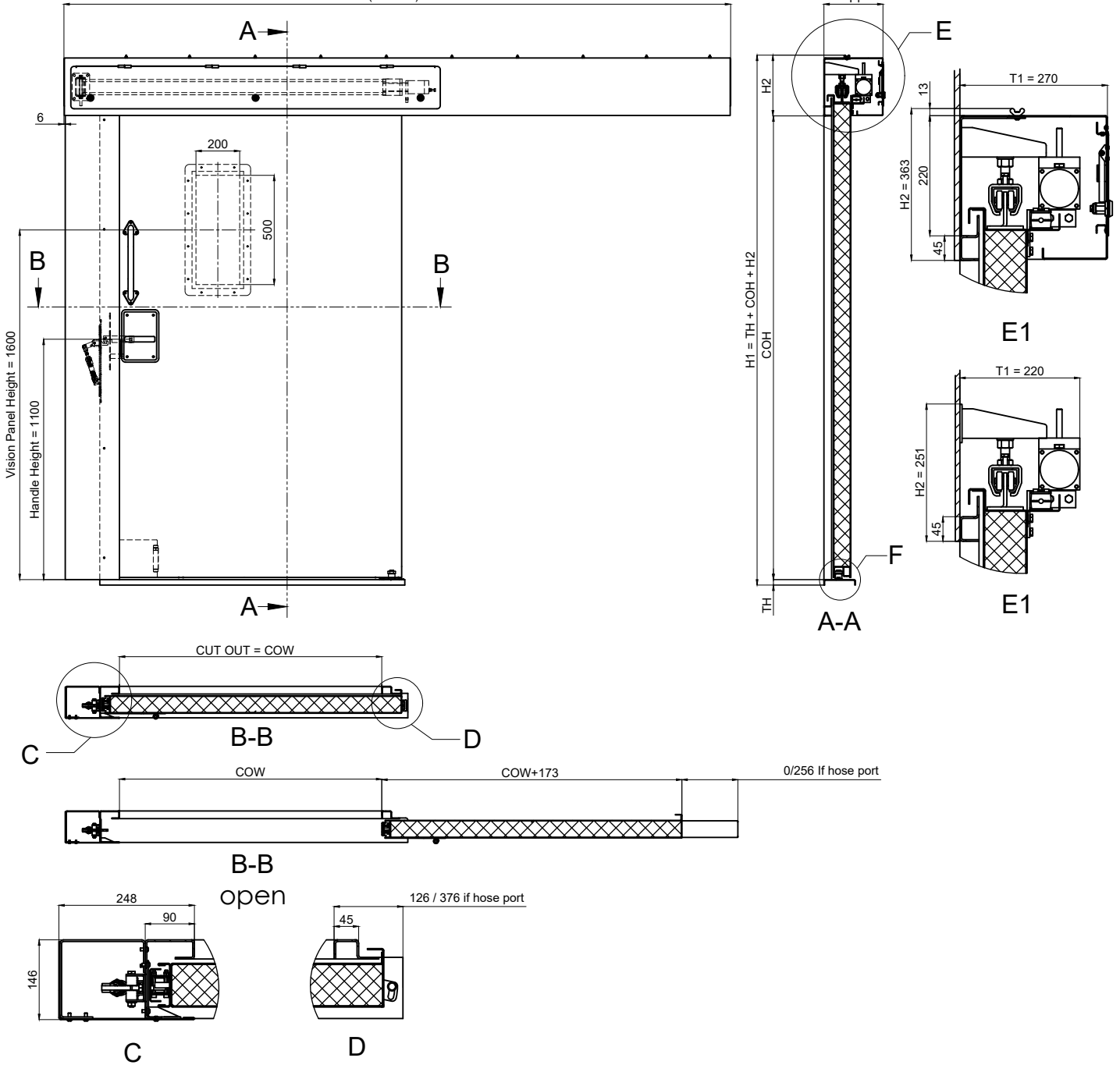
Drawing title:
ENGINEERING TO ORDER
HB-S76 (A-60) SINGLE SLIDING DOOR WITH GASKET
MANUAL OPERATED
TYPICAL GENERAL ARRANGEMENT DRAWING



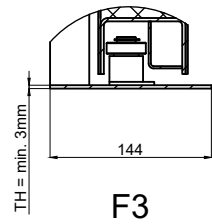
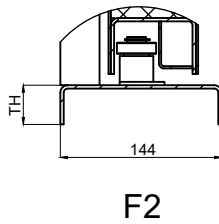
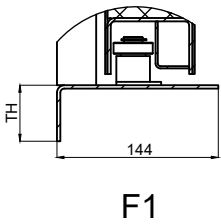
Date: 01.09.2021	Drawn by: MTU	Approved:
Format: A4	Sheet: 1 of 1	Projection:
Fire certificate: MED274917CS-002		
Drawing no.: S-08	Rev.: 02	

W:\110_AC-File_Locations\70_Marketing_DWG\HB-S76_marketing_DWG.dwg

$L = (2 \times \text{COW}) + 650$

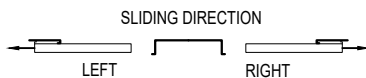


F: Threshold Type



Notes:

1. Example shows a right sliding door.
2. E1 shows the door with weather cover and suspension plate.
3. E2 shows the door without weather cover and with loose brackets.
4. Vision panel as an option.
5. Hose port as an option.
6. Pneumatic cylinder stroke: COW + 100

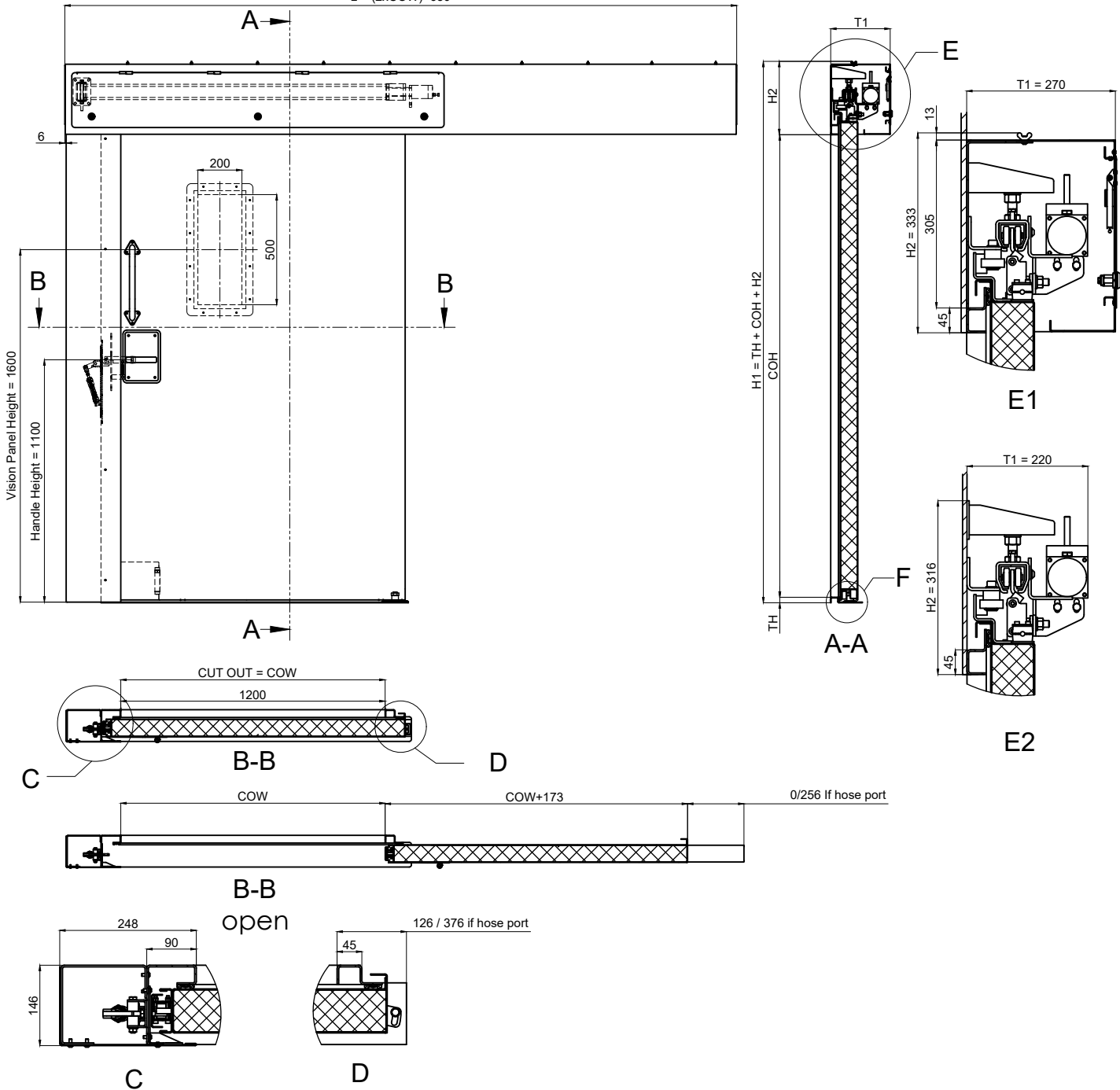


Drawing title:
ENGINEERING TO ORDER
HB-S76 (A-60) SINGLE SLIDING DOOR WITHOUT GASKET
PNEUMATIC OPERATED
TYPICAL GENERAL ARRANGEMENT DRAWING

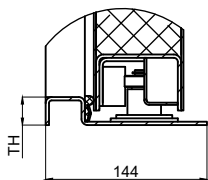


Date: 01.09.2021	Drawn by: MTU	Approved:
Format: A4	Sheet: 1 of 1	Projection:
Fire certificate: MED274917CS-002		Rev.: 01
Drawing no.: S-08		

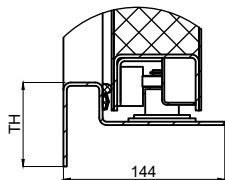
$L = (2 \times COW) + 650$



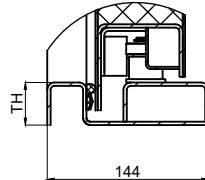
F: Threshold Type



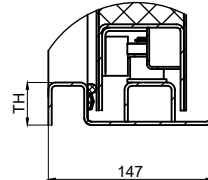
F1



F2



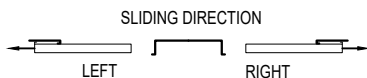
F3



F4

Notes:

1. Example shows a right sliding door.
2. E1 shows the door with weather cover and suspension plate.
3. E2 shows the door without weather cover and with loose brackets.
4. Vision panel as an option.
5. Hose port as an option.
6. Pneumatic cylinder stroke: COW + 100



Drawing title:
ENGINEERING TO ORDER
HB-S76 (A-60) SINGLE SLIDING DOOR WITH GASKET
PNEUMATIC OPERATED
TYPICAL GENERAL ARRANGEMENT DRAWING



Date: 01.09.2021	Drawn by: MTU	Approved:
Format: A4	Sheet: 1 of 1	Projection:
Fire certificate: MED274917CS-002		Rev.: 02
Drawing no.: S-08		