

THE “SMARTER” AND MORE ACCURATE DRIVE SYSTEM

Choosing a solutions-n pneumatic drive system is the best choice of pneumatic drive systems in the maritime market. The system is very sophisticated and use the air pressure very efficiently. The system normally require fewer air reservoirs for emergency operation. The drive system has a very precise movement of the door leaf's. The system is very well documented.

SYSTEM FUNCTION:

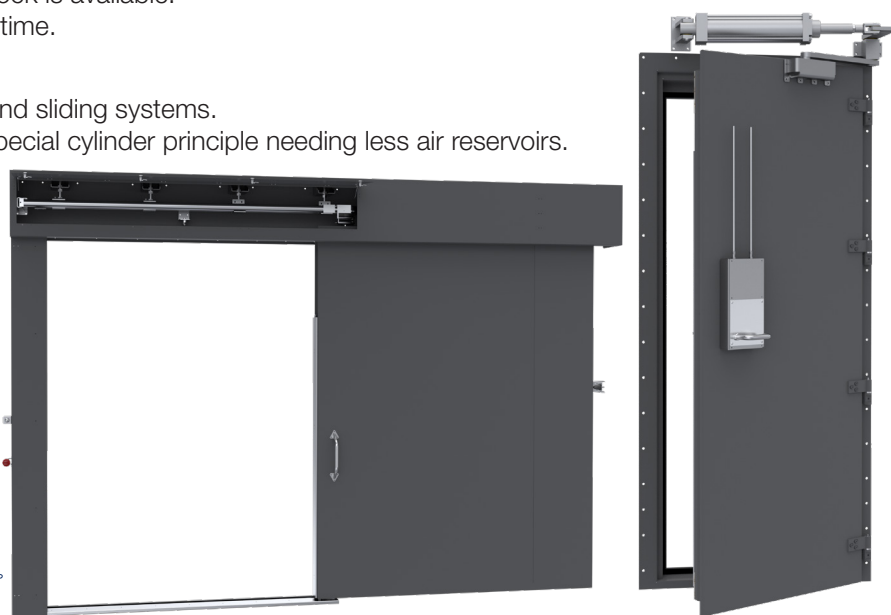
- Immediate stop of the cylinder by activating the safety strip.
- Separate adjustable opening speed by handle or external activator.
- Customization during production phase based on a modular system.
- System prepared for cold “Arctic” environment as a standard.
- Partly same components for sliding and hinged systems.
- Doors up to 800kg door leaf weight can be operated by 22° heeling.
- Open and close by an automatic door lock is available.
- Support by solutions-n available at any time.

SPACE REQUIREMENTS:

- Standard control box sizes for hinged and sliding systems.
- Less space requirements based on a special cylinder principle needing less air reservoirs.
- Less installation work based on a “one-tube” system.

INSTALLATION AND SERVICE:

- Quick and easy to install and service (modular system)
- NEW Product and parts catalogue.
- Data-sheets and 3D-models with all required information available.
- Quick access to documentation
- Express deliveries from stock.
- Part no. Visual inside the system.
- Service personnel trained by solutions-n



System configuration types:

Description	F1050 Drive system for sliding doors	F1050 Drive system for double sliding doors	F3500 Drive system for Hinged doors
Drive-type:	Pneumatic with control box	Pneumatic with control block	Pneumatic with control box
Air supply (BarG): Dry non-lubricated air: (ISO 8573-1:2010)	Normal pressure: 10 (<i>can be up to 16</i>) System pressure: 8	Design pressure: 10 (<i>can be up to 16</i>) System pressure: 8	Design pressure: 10 (<i>can be up to 16</i>) System pressure: 8
Fire class:	A-60	A-60	A-60
Materials	Stainless steel	Stainless steel	Stainless steel
Max. weight of door leaf:	Doors up to 800kg door leaf weight can be operated by 22° heeling	Doors up to 800kg door leaf weight can be operated by 22° heeling	Depending on door width, mounting situation and heeling. Please ask for individual calculation
Control box for system:	Stainless steel	Stainless steel	Stainless steel
Open/Closed position:	Automatic door lock provides opening and possible immediate closing	Automatic door lock provides opening and possible immediate closing	Automatic door lock provides opening and possible immediate closing
Fittings:	Specified by the project (A-LOK, GYROLOK or SWAGELOK)	Specified by the project (A-LOK, GYROLOK or SWAGELOK)	Specified by the project (A-LOK, GYROLOK or SWAGELOK)
Ambient temperature	-25 to 250 degrees Celsius	-25 to 250 degrees Celsius	-25 to 250 degrees Celsius

CONFIGURATION OF PNEUMATIC SYSTEM FOR SLIDING DOORS

INSTALLATION PANEL FOR PNEUMATIC SYSTEM

A pre-installed system panel saves installation time. It also organizes a lot of the parts in the system.



CONTROL BOX

105137 - CONTROL BOX (2.00)
105094 - DOOR OPENING MODUL „DOM WD“ (2.31)

105303 - SHUT-OFF VALVE (2.01.D)

102987 - SPEED REGULATOR VALVE (2.11.A)

105366 - GAUGE (2.03.A)

105083 - FILTER NON-RETURN VALVE „FRM“ (2.05.B)

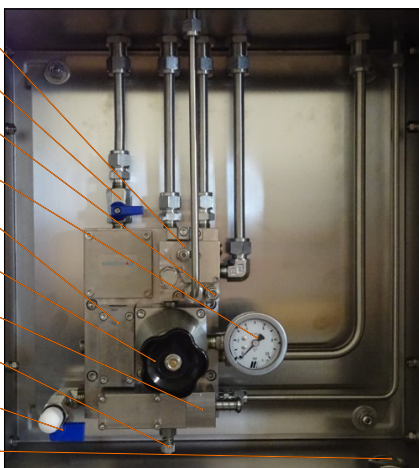
105120 - PRESSURE REDUCER „PRM“ (2.04.F)

105089 - FIRE SAFETY VALVE „FSM 120“ (2.06.B)

102987 - SPEED REGULATOR VALVE (2.11.B)

105303 - SHUT-OFF VALVE (2.01.E)

100325 - „BREATHER“ DRAIN VALVE



FOR MORE INFORMATION ABOUT CONTROL CABINETS, PLEASE SEE: solutions-n product and parts catalogue

AIR FLOW PARTS

Baggerød art. no / solutions-n art. no
Description.



10006589 102800
AIR RESERVOIR TANK 20L (ONLY BOTTLE).



10007457 102644
HEXAGON SOCKET SCREW PLUG



10006829 102804
DRAIN VALVE



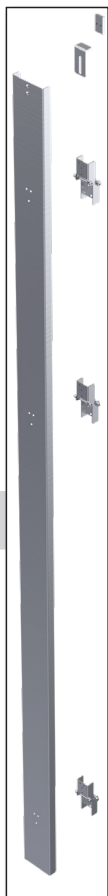
10006815 102602
SAFETY VALVE



10006814 105303
SHUT OFF VALVE (IN CONTROL BOX)



10007358 (BAGGERØD)
BRACKET FOR AIR RESERVOIR



SAFETY SYSTEM PARTS

Baggerød art. no / solutions-n art. no
Description.



SAFETY STRIP (BAGGERØD)
PROJECT/DOOR SPECIFIC NUMBER
“PUSH” RAIL, HINGES, BRACKETS
10002418 (BAGGERØD)
HINGES FOR SAFETY STRIP



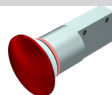
10007349 102555
DOOR OPENING VALVE
SEE PAGE: 17



10006828 102802
TEMPERATURE FEELER “FSV1”
SEE PAGE: 19

DOOR OPERATION PARTS

Baggerød art. no / solutions-n art. no
Description.



10006826 105040
2-2 WAY PUSH BUTTON VALVE



10005407 102839
KNEE-OPERATED SWITCH (OPTION)



10007479 104833
KNEE-OPERATED SWITCH WALL (OPTION)



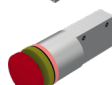
10007456 102543
TWO-WAY PNEUMATIC DOOR HANDLE VALVE (OPTION)



10007415 102490
PULL SWITCH VALVE -1/8 NPT (OPTION)



10005881 102494
EMERGENCY EXHAUST VALVE



10006825 105041
“HOLD OPEN” 2-2 WAY PUSH TURN VALVE -1/8 NPT



10007449 106548
2-2 WAY KEY SWITCH VALVE (OPTION)



10007647 103806
KEY OPERATED SWITCH WITH SPRING RETURN FOR TRIO VING OVAL CYLINDER (OPTION)

OTHER PARTS

Baggerød art. no / solutions-n art. no
Description.



10006827 103062
TAPPET VALVE
SEE PAGE: 17



102595 47154 SILENCER - G1/4
102596 47155 SILENCER - G1/8



10004965 102513
SHOCK ABSORBER/DOOR STOPPER



10007170 (BAGGERØD)
BRACKET FOR SHOCK ABSORBER



10006175 (BAGGERØD)
BRACKET FOR PUSH BUTTON “L”



10006176 (BAGGERØD)
BRACKET FOR PUSH BUTTON “U”



10006177 (BAGGERØD)
BRACKET FOR EMERGENCY VALVE “L”



10006174 (BAGGERØD)
BRACKET FOR EMERGENCY VALVE “U”



10007009
BRACKET FOR KEY SWITCH TRIO VING “U”



10006242 (BAGGERØD)
HOOK-LATCH RELEASE ASSEMBLY
(INCLUDES 10006240/ 106609 HOOK LATCH LOCKING CYLINDER)



10006278 (BAGGERØD)
BRACKET FOR HOOK-LATCH RELEASE ASSEMBLY